



Crystal Innovations

AW 2024

PRECIOSA



PRECIOSA

CONTENTS



6

TREND FORECAST
**Supernatural
Glow**



36

NEW COLOR
Light Graphite



44

NEW COATING
Jet Odyssey



12

TREND FORECAST
**Warped
Classics**



18

TREND FORECAST
Nostalgic Lux



52

NEW FLATBACK SHAPE
Kite



62

RANGE EXTENSION
**Additional
Colors**



26

NEW COLOR
Cobalt Blue



Trend Forecasts

AW 2024

TREND FORECAST

Supernatural Glow

In a world facing the end of resource abundance, all industries will be searching for alternatives in the coming years. As designers and consumers speculate about what our future terrains will look like – either on Earth or in space – we will see the emergence of products and aesthetics that appear to have been excavated from the ground or plucked from the cosmos.

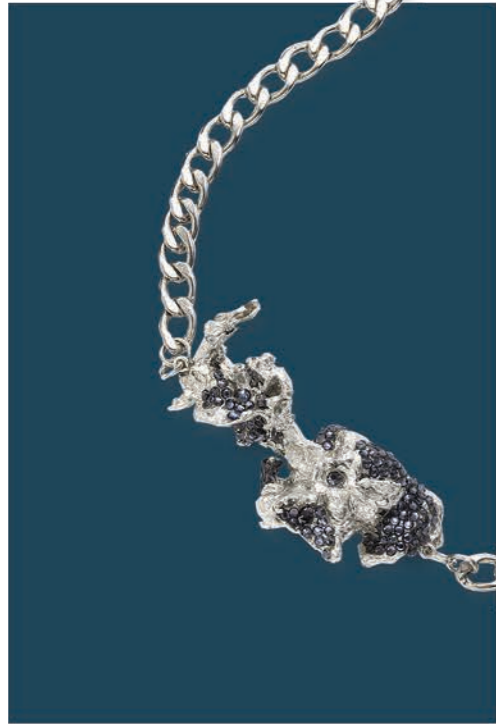


TREND FORECAST
Supernatural Glow



Chaton Rose MAXIMA Crystal Neon Orange | **Chaton Rose MAXIMA** Cobalt Blue AB | **Pear MAXIMA in sew-on setting** Fuchsia
Ball Rondelle with Chatons MAXIMA Tanzanite | **Chaton Rose MAXIMA** Cobalt Blue | **Rondelle Bead** Cobalt Blue AB
Pear MAXIMA Blue Zircon | **Chaton Rose MAXIMA** Crystal Neon Green | **Channel MAXIMA** Amethyst

Supernatural Glow



CRYSTAL INNOVATIONS >>>

Chaton Rose MAXIMA Cobalt Blue AB

Pear MAXIMA Blue Zircon

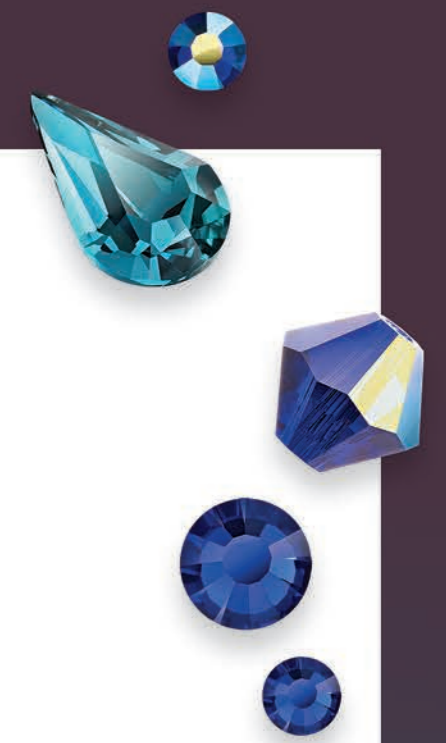
Rondelle Bead Cobalt Blue AB

Chaton Rose MAXIMA Cobalt Blue



Look out for crystal-encrusted gloopy surfaces reminiscent of space junk, or references to volcanic materials and barren lunar landscapes through careful choice of color and pops of subtle shimmer.

Murky colors and swampy textures are elevated with intense pigments like Cobalt Blue, creating an otherworldly bioluminescent effect.



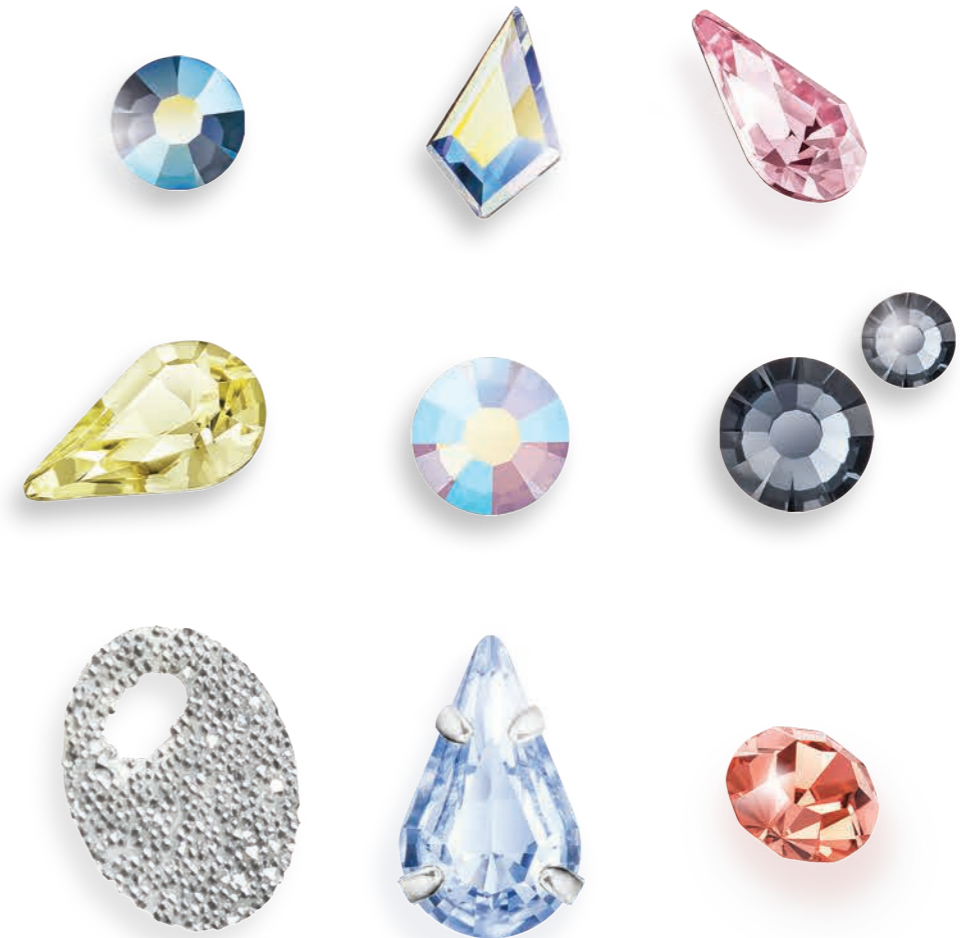
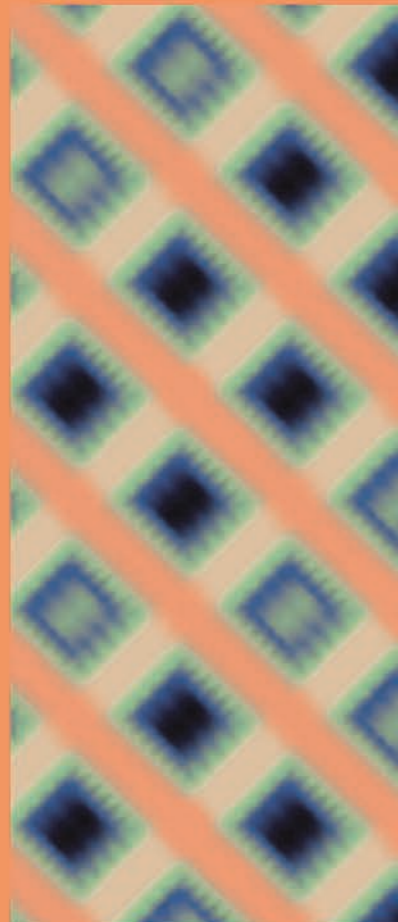
TREND FORECAST

Warped Classics

Transformative colors, long-lasting designs and playfully dystopian looks drive this forecast, inspired by developments in AI technology and fashion innovation. Expect to see more futuristic and fluid forms, as well as changeable finishes with ombré and sprayed effects. The re-emergence of surrealism, which first flourished in the upheaval of the 1920s, will find fresh relevance amid the polycrisis of the 2020s as designers reject rationalism.



TREND FORECAST
Warped Classics



Chaton Rose MAXIMA Light Graphite AB | **Kite MAXIMA FB** Crystal AB | **Pear MAXIMA** Light Rose

Pear MAXIMA Jonquil | **Chaton Rose MAXIMA** Rose Opal AB | **Chaton Rose MAXIMA** Light Graphite

Crystal Sheet with transparent film Crystal Labrador | **Pear MAXIMA in sew-on setting** Light Sapphire | **Chaton MAXIMA** Padparadscha

Warped Classics

CRYSTAL INNOVATIONS

Pear MAXIMA Light Sapphire

Kite MAXIMA FB Crystal AB

Pear MAXIMA Jonquil

Chaton Rose MAXIMA Light Graphite

Chaton Rose MAXIMA Light Graphite AB



Combine glowing brights with pacifying pastel tints, such as Light Rose or Light Sapphire, to create a soft psychedelic daydream, or embrace the barely-there effect with the washed-out shimmer of Light Graphite.

This direction takes on a "ghostly" translucency that can be applied in a minimal or maximal way, ideally suited for occasion drops and crystal-embellished menswear.

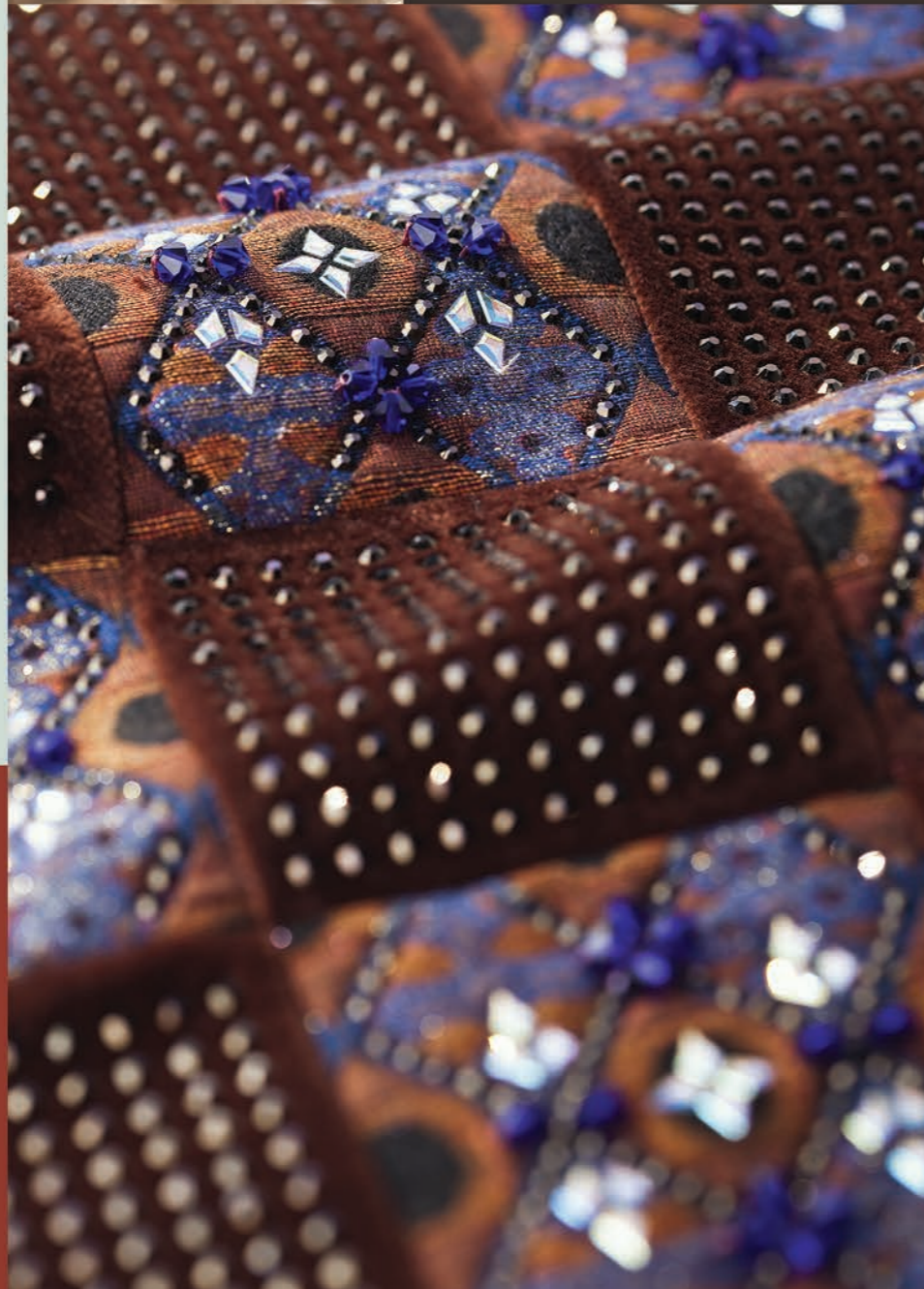
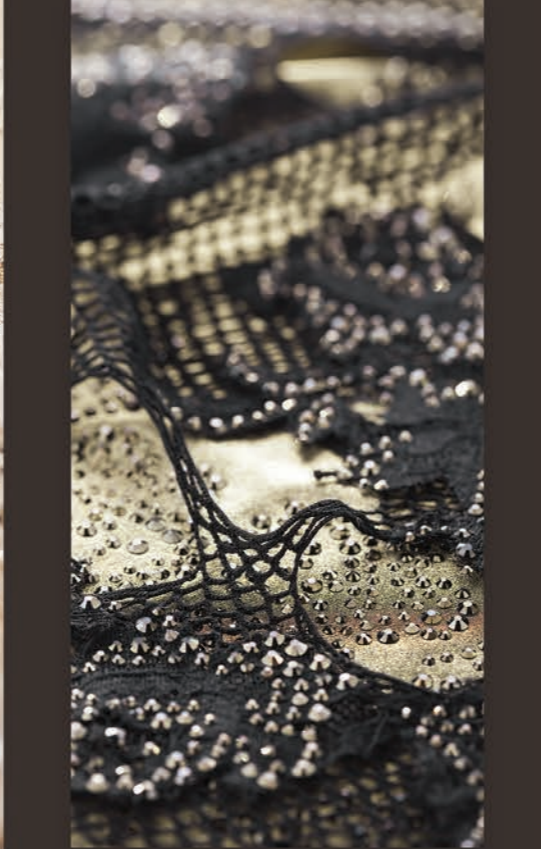


TREND FORECAST

Nostalgic Lux

Harder, spikier themes will emerge as consumers reject complacency and lean towards direct action to drive change, calling on the rebellious, anarchic spirit of punk while acknowledging the power of our interconnectedness. Myths, folklore and spiritual themes will be respectfully remixed, driven by ethical collaborations, while craft will appear in more elevated contexts or as unexpected details.





Pear MAXIMA in sew-on setting Light Siam | **Kite MAXIMA FB** Crystal | **Pin with Chaton Rose MAXIMA** Jet Odyssey
Chaton Rose MAXIMA Jet Odyssey | **Spike Cone MAXIMA FB** Black Diamond | **Pear MAXIMA** Siam
Cupchain with Chatons MAXIMA Light Siam | **Pear MAXIMA** Chrysolite | **Round Bead Simple** Crystal Honey

TREND FORECAST
Nostalgic Lux



The rebellious streak and darker mood central to this trend is reflected in the importance of classic Jet and metallic Odyssey, which are complemented by full-blooded Siam, key for emo and punk-led stories.



CRYSTAL INNOVATIONS

Chaton Rose MAXIMA Jet Odyssey

Pear MAXIMA Siam

Kite MAXIMA FB Crystal



Subversive themes that draw on 1990s goth culture as well as more historical medieval influences take shape in amour-like accessories that exude powerful shine.



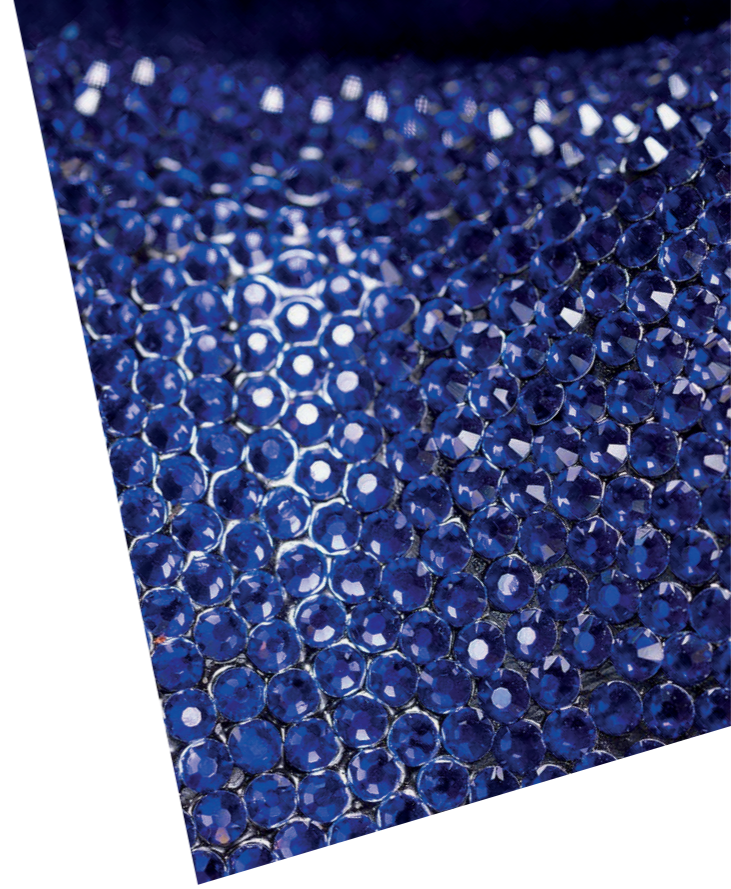
Crystal Innovations

AW 2024

CIOSA PRECIOSA PRECIOSA PRECIOSA

PRECIOSA PRECIOSA PRECIOSA

ECIOSA PRECIOSA PRECIOSA



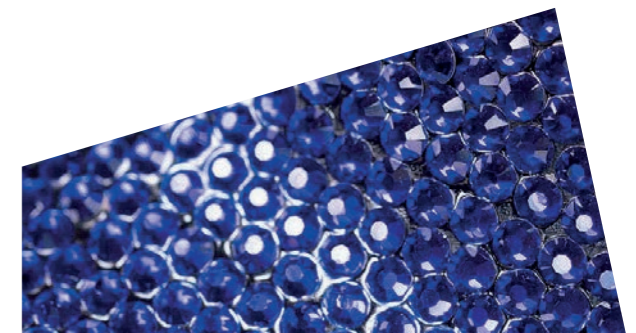
NEW COLOR
Cobalt Blue

Chaton Roses MAXIMA & VIVA 12®

No Hotfix and Hotfix
Sizes: ss5—ss34

Rondelle Bead

Sizes: 3mm—6mm

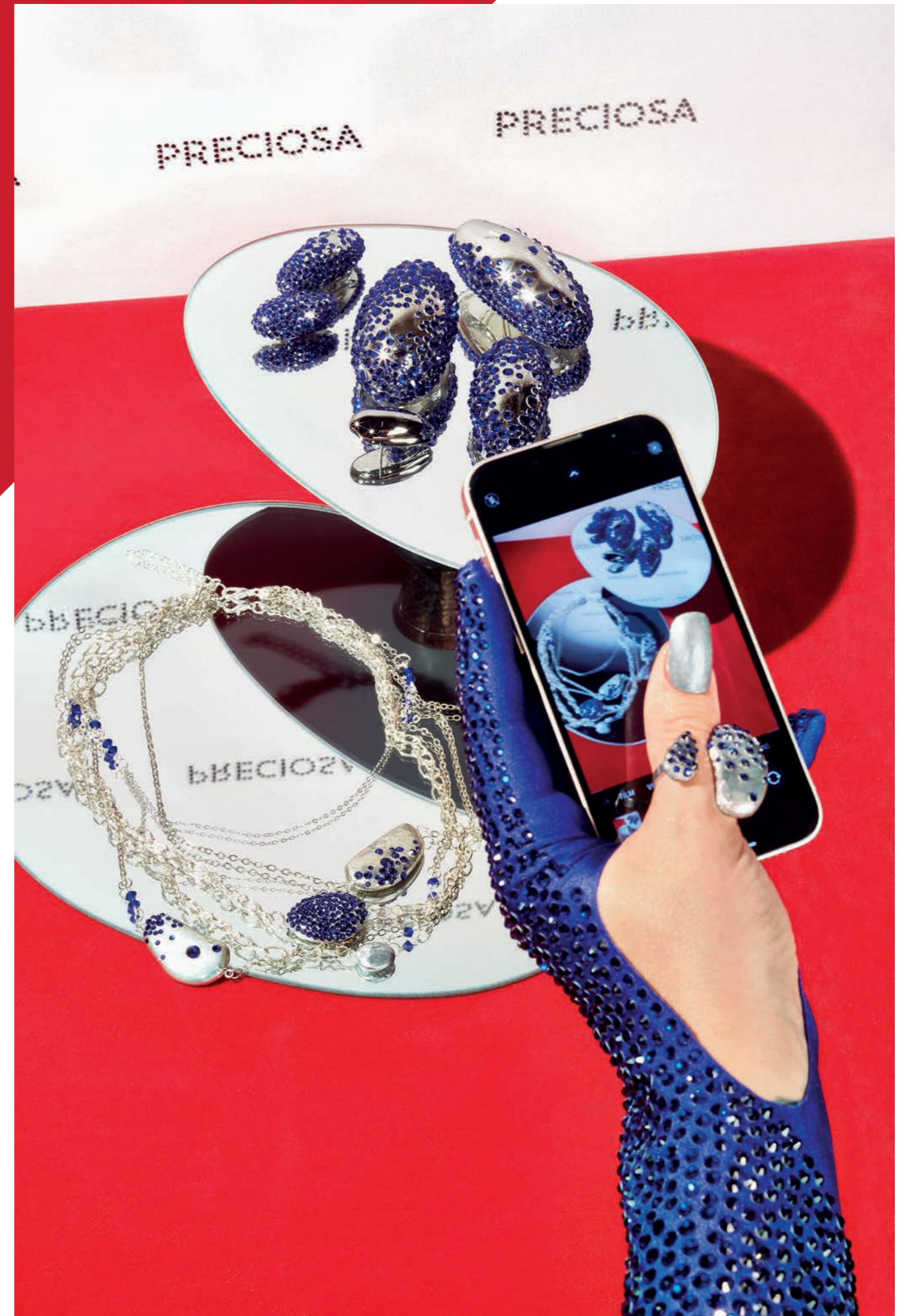


NEW COLOR

Cobalt Blue

COBALT BLUE

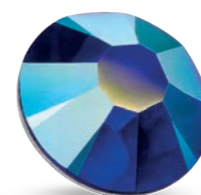
Compelling and expressive, Cobalt Blue retains universal appeal for its ability to transform. This especially gender-inclusive shade feels both familiar and futuristic, tapping into a post-natural world where AI and digital augmentation are inseparable from wearable design.



NEW COLOR
Cobalt Blue



Cobalt Blue

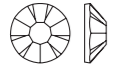


Cobalt Blue AB

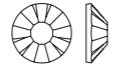
NEW COLOR

Cobalt Blue

Chaton Rose MAXIMA





ART. 438 11 615
SIZE: ss 5, 6, 7, 8, 9, 10, 12, 16, 20





ART. 438 11 618
SIZE: ss 30, 34

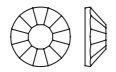
NO HOTFIX

| COLOR / COATING | 5 | 6 | 7 | 8 | 9 | 10 | 12 | 16 | 20 | 30 | 34 |
|--|---|---|---|---|---|----|----|----|----|----|----|
|  Cobalt Blue 30240 | ● | ● | ● | ● | ● | ● | ● | ● | ● | ○ | ○ |
|  Cobalt Blue AB 30240 20032 | ○ | ○ | ○ | ○ | ○ | ○ | ○ | ○ | ○ | ○ | ○ |

HOTFIX



| COLOR / COATING | 5 | 6 | 7 | 8 | 9 | 10 | 12 | 16 | 20 | 30 | 34 |
|--|---|---|---|---|---|----|----|----|----|----|----|
|  Cobalt Blue 30240 | ● | ○ | ○ | ○ | ○ | ○ | ○ | ○ | ○ | ○ | ○ |
|  Cobalt Blue AB 30240 20055 | ○ | ○ | ○ | ○ | ○ | ○ | ○ | ○ | ○ | ○ | ○ |

Chaton Rose VIVA 12°





ART. 438 11 612
SIZE: ss 5, 6, 7, 8, 9, 10, 12, 16, 20, 30, 34

NO HOTFIX

| COLOR / COATING | 5 | 6 | 7 | 8 | 9 | 10 | 12 | 16 | 20 | 30 | 34 |
|--|---|---|---|---|---|----|----|----|----|----|----|
|  Cobalt Blue 30240 | ● | ● | ● | ● | ● | ● | ● | ● | ● | ● | ● |
|  Cobalt Blue AB 30240 20011 | ○ | ○ | ○ | ○ | ○ | ○ | ○ | ○ | ○ | ○ | ○ |

HOTFIX

| COLOR / COATING | 5 | 6 | 7 | 8 | 9 | 10 | 12 | 16 | 20 | 30 | 34 |
|--|---|---|---|---|---|----|----|----|----|----|----|
|  Cobalt Blue 30240 | ● | ● | ○ | ○ | ○ | ○ | ○ | ○ | ○ | ○ | ○ |
|  Cobalt Blue AB 30240 20057 | ○ | ○ | ○ | ○ | ○ | ○ | ○ | ○ | ○ | ○ | ○ |

KEY:

- Standard portfolio item
- Minimum order quantity required
- Innovation
- Innovation, minimum order quantity required



NEW COLOR

Cobalt Blue

Rondelle Bead



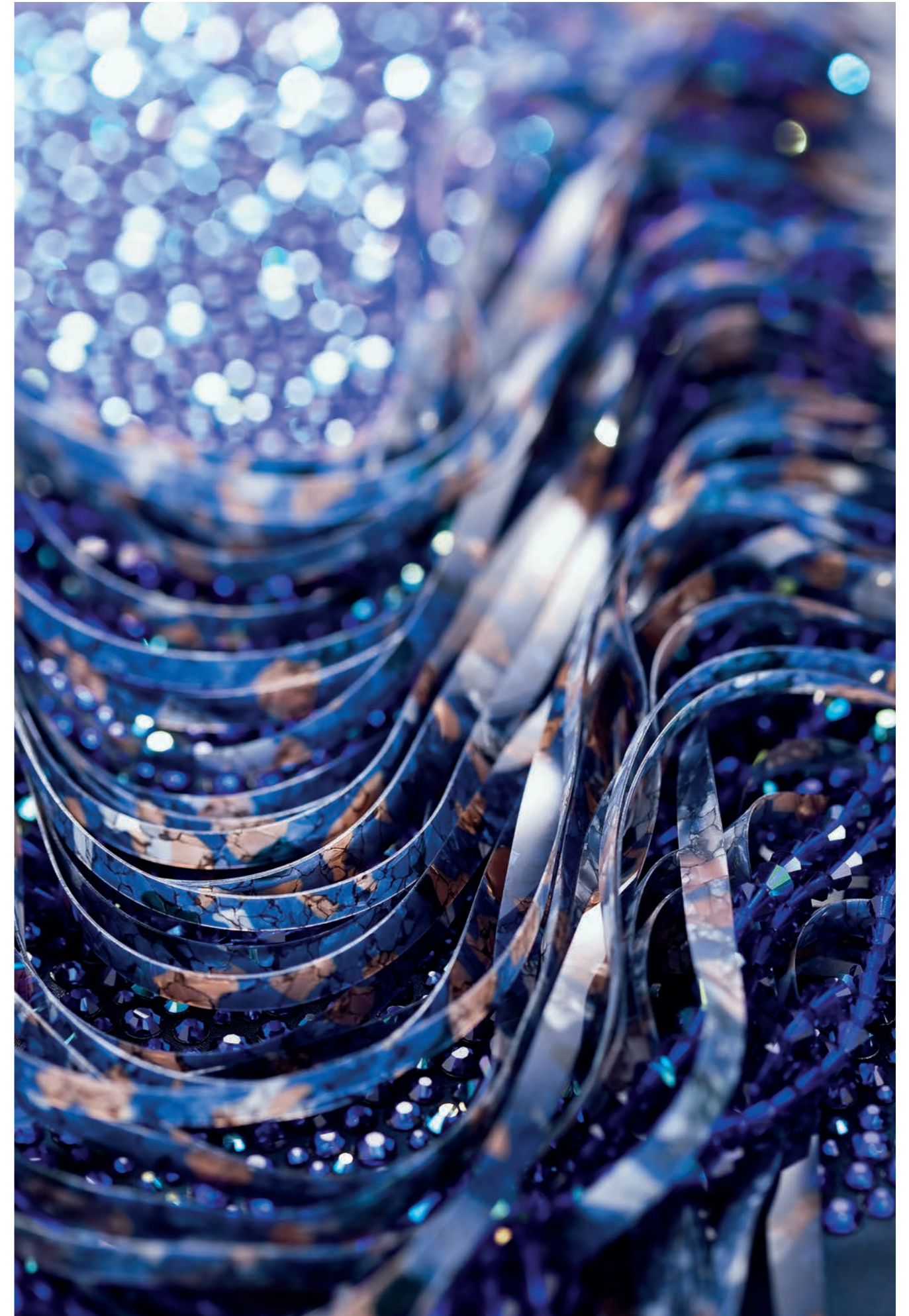
ART. 451 69 302
SIZE: mm 3, 4, 5, 6

COLOR / COATINGS

| | 3 | 4 | 5 | 6 |
|---|---|---|---|---|
| Cobalt Blue 30240 | ● | ● | ● | ● |
| Cobalt Blue AB 30240 20001 (HC) | ● | ● | ● | ● |
| Cobalt Blue AB 2x 30240 20000 (FC) | ○ | ○ | ○ | ○ |
| Cobalt Blue Matte 30240 84030 | ○ | ○ | ○ | ○ |
| Cobalt Blue Matte AB 30240 20019 | ○ | ○ | ○ | ○ |

KEY:

- Standard portfolio item
- Minimum order quantity required
- Innovation
- Innovation, minimum order quantity required

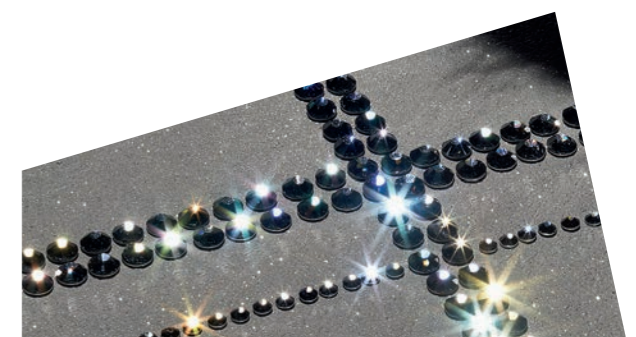
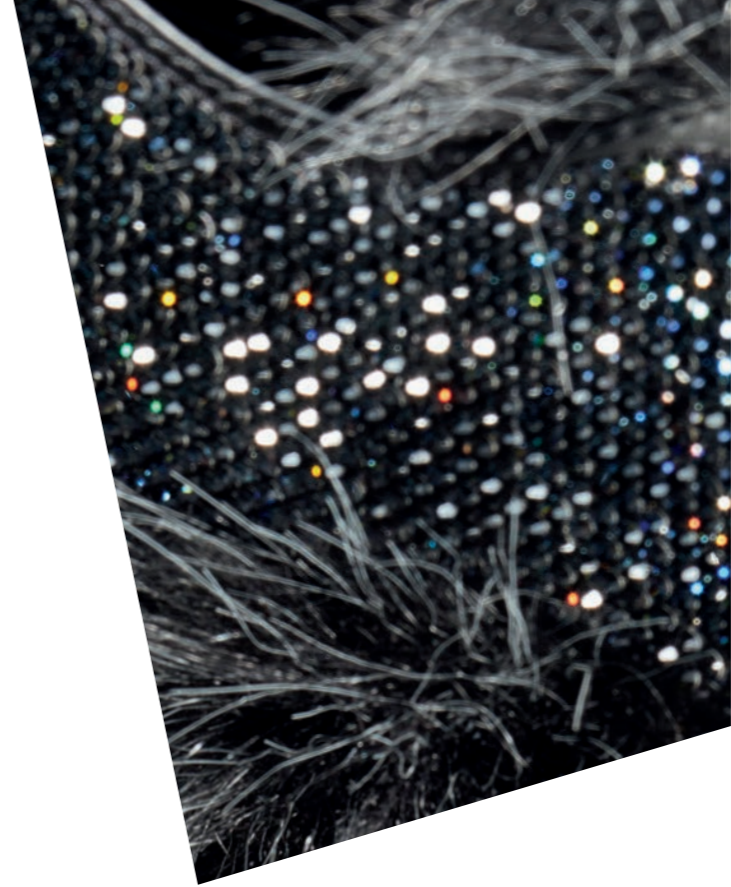




NEW COLOR
Light Graphite

Chaton Roses MAXIMA & VIVA 12®

No Hotfix and Hotfix
Sizes: ss5—ss34



NEW COLOR

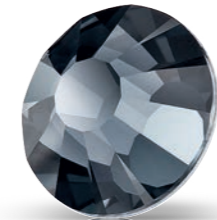
Light Graphite

LIGHT GRAPHITE

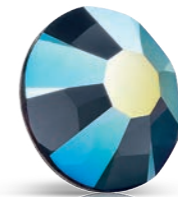
The soft silvery gray of Light Graphite evokes a sense of low-key luxury immune to trends and #core aesthetics. Timeless and transseasonal, Light Graphite is minimalist and menswear friendly, ideal for elevating tinted neutrals and incorporating more casual barely-there bling.



NEW COLOR
Light Graphite



Light Graphite

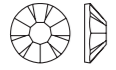


Light Graphite AB

NEW COLOR

Light Graphite

Chaton Rose MAXIMA





ART. 438 11 615
SIZE: ss 5, 6, 7, 8, 9, 10, 12, 16, 20





ART. 438 11 618
SIZE: ss 30, 34

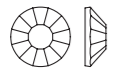
NO HOTFIX

| COLOR / COATING | | ss | 5 | 6 | 7 | 8 | 9 | 10 | 12 | 16 | 20 | 30 | 34 |
|---|-------------|---------|---|---|---|---|---|----|----|----|----|----|----|
|  Light Graphite | 40080 | DF | ● | ● | ● | ● | ● | ● | ● | ● | ● | ○ | ○ |
|  Light Graphite AB | 40080 20032 | (TC) DF | ○ | ○ | ○ | ○ | ○ | ○ | ○ | ○ | ○ | ○ | ○ |

HOTFIX



| COLOR / COATING | | ss | 5 | 6 | 7 | 8 | 9 | 10 | 12 | 16 | 20 | 30 | 34 |
|---|-------------|---------|---|---|---|---|---|----|----|----|----|----|----|
|  Light Graphite | 40080 | HF | ● | ● | ● | ● | ● | ● | ● | ● | ○ | ○ | ○ |
|  Light Graphite AB | 40080 20055 | (TC) HF | ○ | ○ | ○ | ○ | ○ | ○ | ○ | ○ | ○ | ○ | ○ |

Chaton Rose VIVA 12°





ART. 438 11 612
SIZE: ss 5, 6, 7, 8, 9, 10, 12, 16, 20, 30, 34

NO HOTFIX

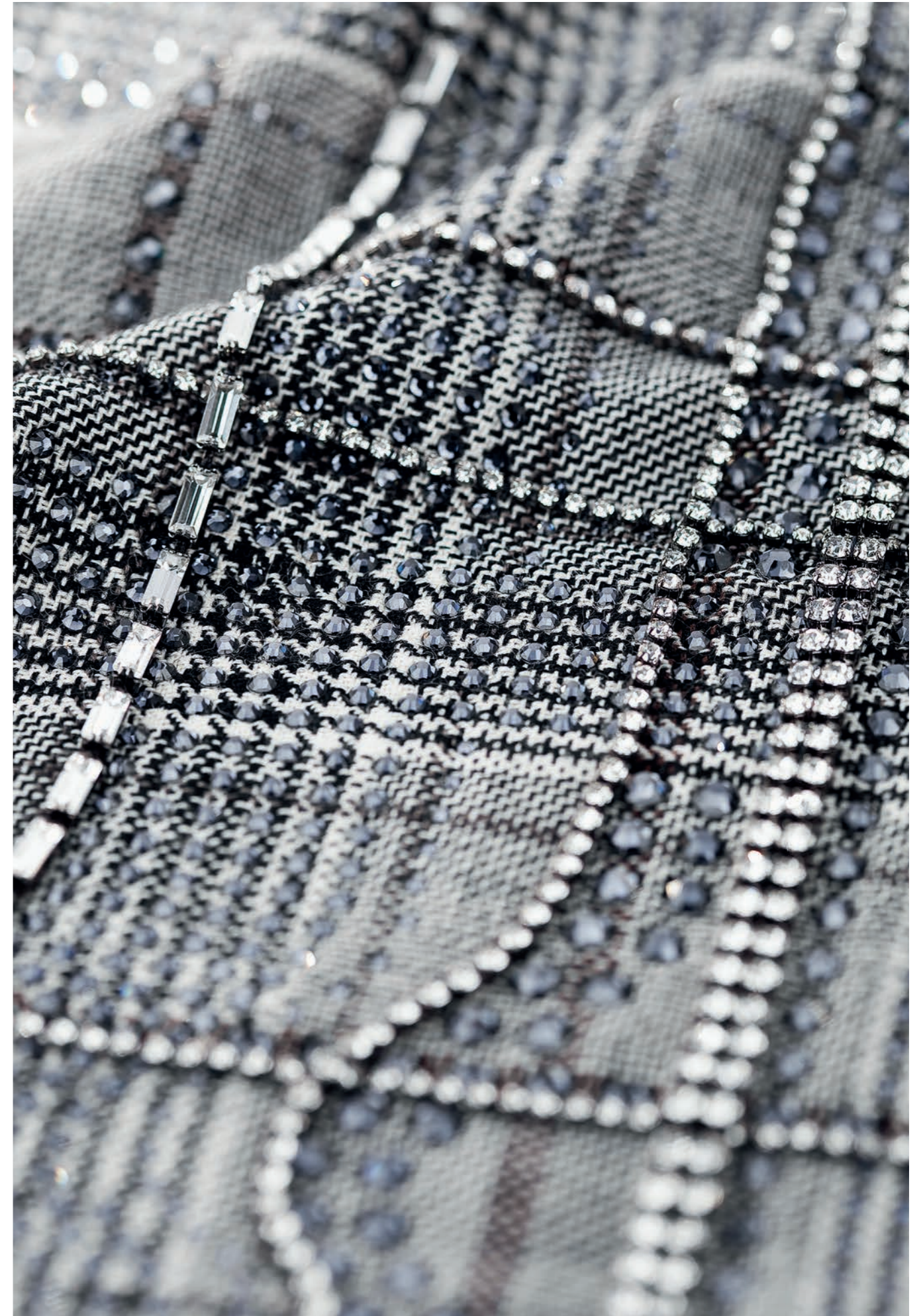
| COLOR / COATING | | ss | 5 | 6 | 7 | 8 | 9 | 10 | 12 | 16 | 20 | 30 | 34 |
|---|-------------|--------|---|---|---|---|---|----|----|----|----|----|----|
|  Light Graphite | 40080 | S | ● | ● | ● | ● | ● | ● | ● | ● | ● | ● | ● |
|  Light Graphite AB | 40080 20011 | (TC) S | ○ | ○ | ○ | ○ | ○ | ○ | ○ | ○ | ○ | ○ | ○ |

HOTFIX

| COLOR / COATING | | ss | 5 | 6 | 7 | 8 | 9 | 10 | 12 | 16 | 20 | 30 | 34 |
|---|-------------|---------|---|---|---|---|---|----|----|----|----|----|----|
|  Light Graphite | 40080 | HF | ● | ● | ● | ● | ● | ● | ● | ● | ● | ○ | ○ |
|  Light Graphite AB | 40080 20057 | (TC) HF | ○ | ○ | ○ | ○ | ○ | ○ | ○ | ○ | ○ | ○ | ○ |

KEY:

- Standard portfolio item
- Minimum order quantity required
- Innovation
- Innovation, minimum order quantity required





NEW COATING
Jet Odyssey

Chaton Roses MAXIMA & VIVA 12®

No Hotfix and Hotfix
Sizes: ss5—ss40



NEW COATING

Jet Odyssey

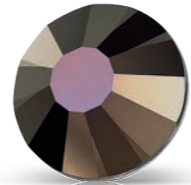
JET ODYSSEY

Embark on a fearless fashion journey with our new metallic coating, Odyssey. The perfect shade of shimmery bronze, Odyssey empowers and amplifies design craft as it blurs the line between hardware and embellishment, creating a distinct hyper futuristic feel.



NEW COATING

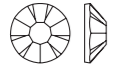
Jet Odyssey



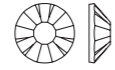
Jet Odyssey

Jet Odyssey

Chaton Rose MAXIMA



ART. 438 11 615
SIZE: ss 5, 6, 7, 8, 9, 10, 12, 16, 20

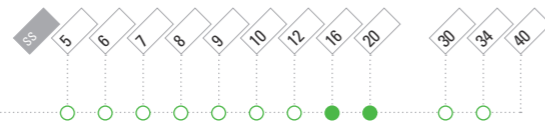


ART. 438 11 618
SIZE: ss 30, 34, 40

NO HOTFIX

COATING

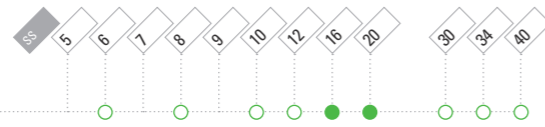
Jet Odyssey | 23980 25732/25701 (TC) DF/U



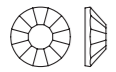
HOTFIX

COATING

Jet Odyssey | 23980 25755 (TC) HF



Chaton Rose VIVA 12°

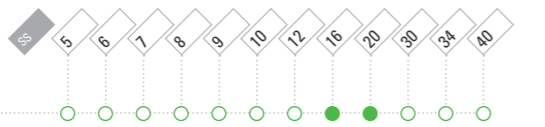


ART. 438 11 612
SIZE: ss 5, 6, 7, 8, 9, 10, 12, 16, 20, 30, 34, 40

NO HOTFIX

COATING

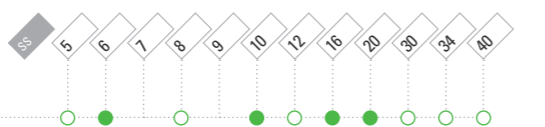
Jet Odyssey | 23980 25711/25701 (TC) S/U



HOTFIX

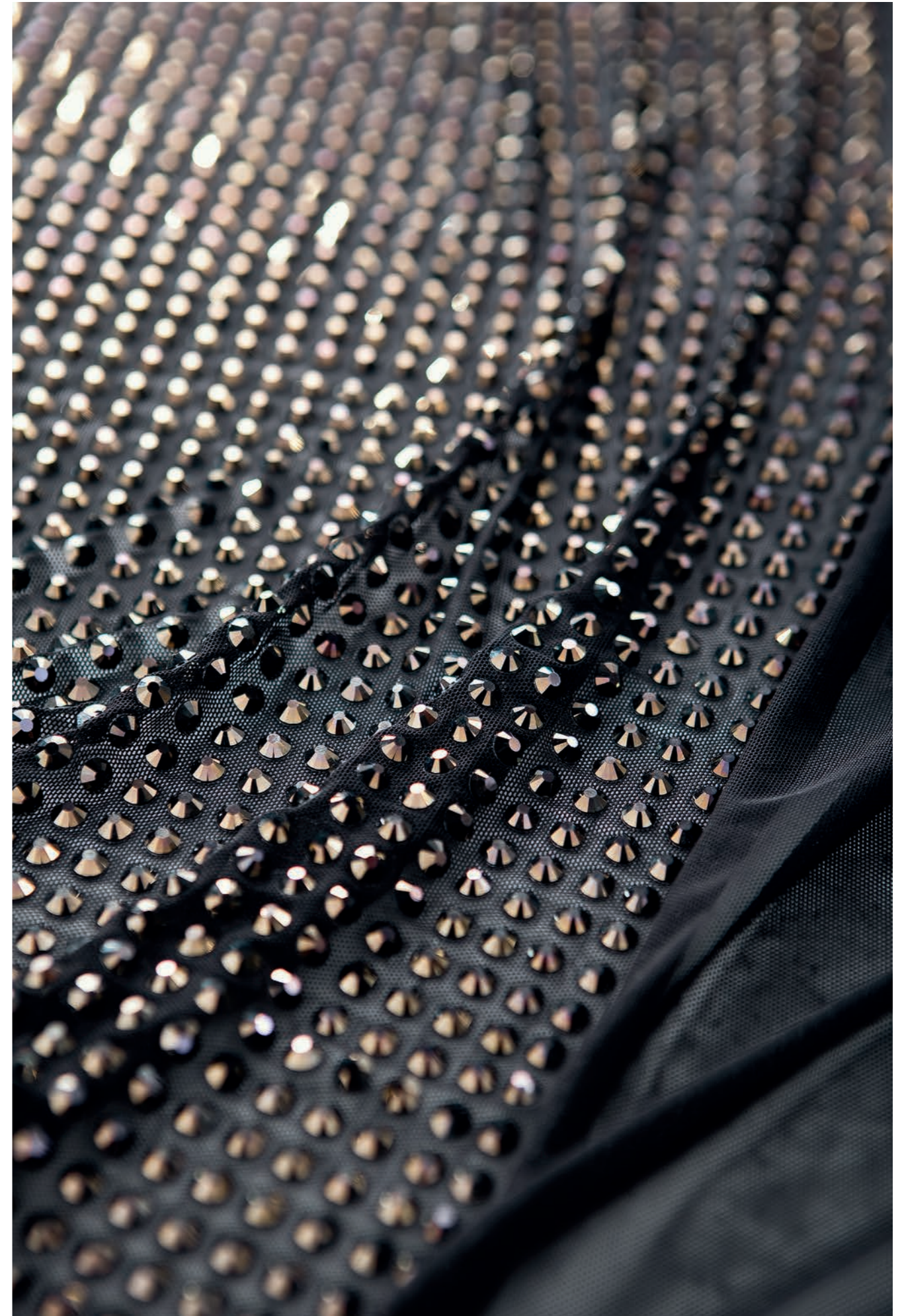
COATING

Jet Odyssey | 23980 25757 (TC) HF



KEY:

- Standard portfolio item
- Minimum order quantity required
- Innovation
- Innovation, minimum order quantity required



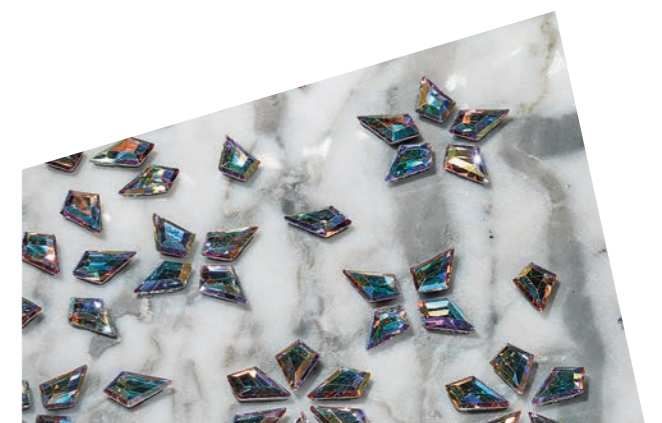
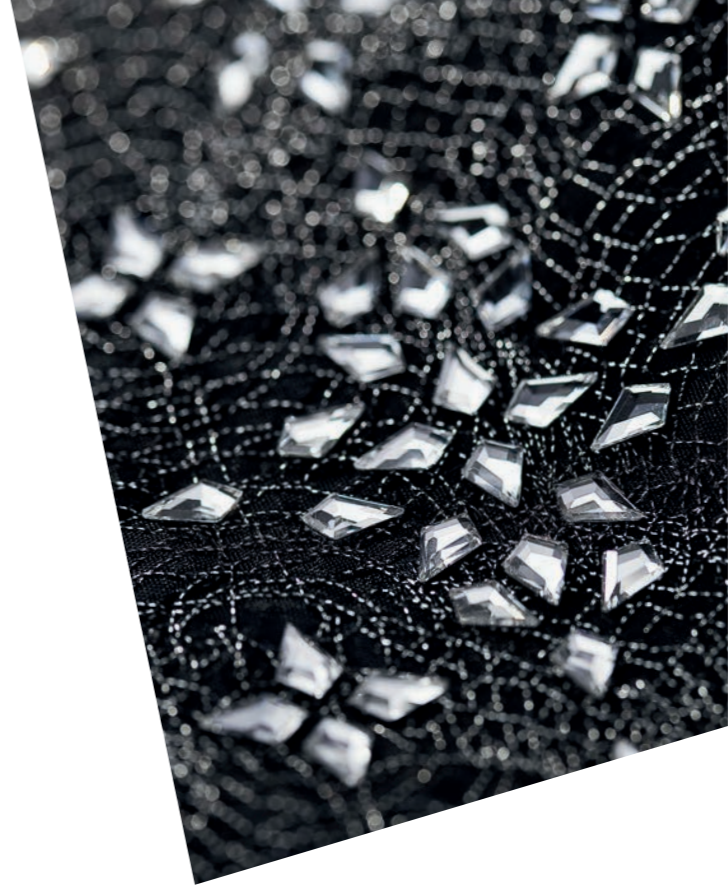


NEW FLATBACK SHAPE

Kite

Kite MAXIMA FB

No Hotfix and Hotfix
Size: 6.4 x 4.2mm
Colors: Crystal, Crystal AB



NEW FLATBACK SHAPE

Kite

KITE

As versatile as it is unique, our new Kite flatback fulfills a desire for iconic symbols that can be cute but also glamorous. Ripe for experimentation across fashion segment, styling and context transform the Kite from nostalgic and playful to impossibly chic and modern.

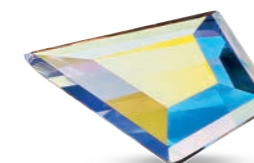


NEW FLATBACK SHAPE

Kite



Crystal



Crystal AB

Kite

Kite MAXIMA FB 



ART. 438 28 220
SIZE: mm 6.4×4.2

NO HOTFIX

COLOR / COATING

mm 6.4×4.2

 Crystal | 00030 DF 

 Crystal AB | 00030 20031 (TC) DF 

HOTFIX

COLOR / COATING

mm 6.4×4.2

 Crystal | 00030 DF 

 Crystal AB | 00030 20057 (TC) DF 

KEY:

- Standard portfolio item
- Minimum order quantity required
- Innovation
- Innovation, minimum order quantity required



NEW FLATBACK SHAPE

Kite





RANGE EXTENSION
Additional Colors

Pear MAXIMA

Sizes: All

Blue Zircon | Chrysolite | Fuchsia | Jonquil | Light Rose
Light Sapphire | Light Siam | Rose | Sapphire | Violet



RANGE EXTENSION

Additional Colors

PEAR MAXIMA | ADDITIONAL COLORS

All four sizes of our Pear MAXIMA now come in ten additional colors.



RANGE EXTENSION
Additional Colors

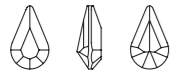


Fuchsia

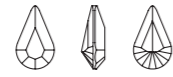


Additional Colors

Pear MAXIMA 



ART. 435 15 615
SIZE: mm 6×3.6



ART. 435 15 615
SIZE: mm 8×4.8, 10×6, 13×7.8

COLORS

| | mm | 6×3.6 | 8×4.8 | 10×6 | 13×7.8 |
|---|----|-------|-------|------|--------|
|  Blue Zircon 60230 | DF | ● | ● | ● | ● |
|  Chrysolite 50000 | DF | ● | ● | ● | ● |
|  Fuchsia 70350 | DF | ● | ● | ● | ● |
|  Jonquil 80100 | DF | ● | ● | ● | ● |
|  Light Rose 70020 | DF | ● | ● | ● | ● |
|  Light Sapphire 30020 | DF | ● | ● | ● | ● |
|  Light Siam 90070 | DF | ● | ● | ● | ● |
|  Rose 70010 | DF | ● | ● | ● | ● |
|  Sapphire 30050 | DF | ● | ● | ● | ● |
|  Violet 20310 | DF | ● | ● | ● | ● |

KEY:

- Standard portfolio item
- Minimum order quantity required
- Innovation
- Innovation, minimum order quantity required





RANGE EXTENSION
Additional Colors

Bohemian *crafted* since 1548

Preciosa Components

A Member of the Preciosa Group

A global leader in luxury goods manufactured from crystal, the Preciosa Group stands upon centuries of glassmaking tradition and innovation. From the world's smallest faceted flatback stone to our cutting-edge, bespoke lighting installations, Preciosa looks to our own unique heritage to draw inspiration for the future of responsibly crafted Bohemian crystal. Together, the Group operates regional offices across Europe, North America and Asia and melts 40 tons of glass every day.

[PreciosaComponents.com](https://www.PreciosaComponents.com)